

Design Afoot: Athletic Shoes 1995-2000

SFMoMA

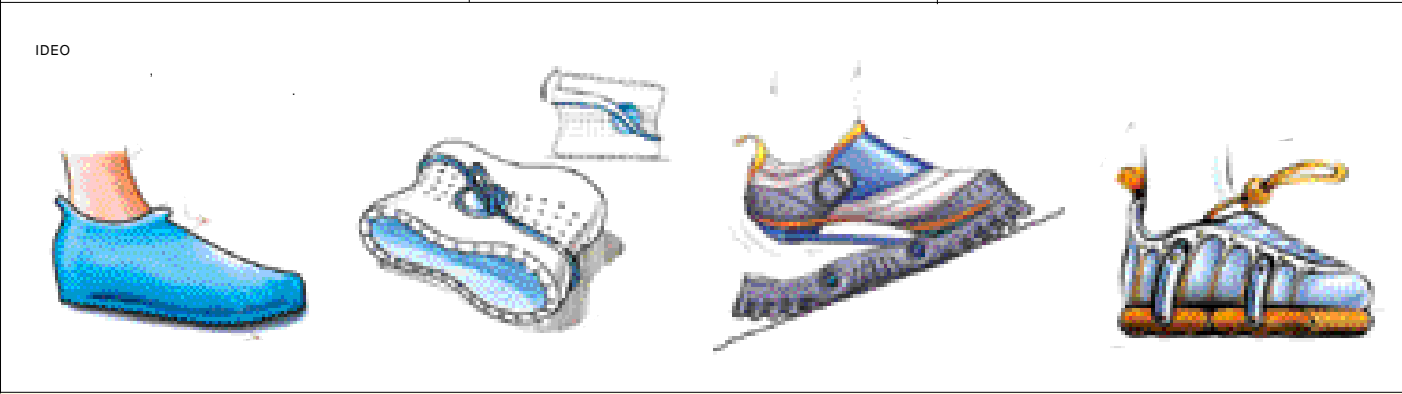
(2000 7 22 -10 17)

A Look Back at the Recent Years of Athletic Shoes Design at SFMoMA, 'Design Afoot : Athletic Shoes 1995-2000' (July 22-October 17, 2000)



(Acupuncture) Collection Acupuncture Clothing, 1999

5
10
가 (Salvatore Ferragamo)
가 가.
(화) 가
가
(San Francisco Musum of Modern Art, SFMoMA) 'Design Afoot: Athletic Shoes 1995-2000' 7
22 10 17
(Aaron Betsky) (frogdesign, inc)
(Steven Skov Holt) 5
가
150
가
가 (Karim Rachid), (tucker Viemeister), IDEO (FuseProject) (Yves Behar) 2-D 가
(New Balance)
(Tommy Hilfiger) (Ralph Lauren)
SFMoMA (San Francisco Museum of Modern Art)
151 Third Street (Mission and Howard Street)
San Francisco, CA 94103
Tel: (1) 415 357 4000 Fax: (1) 415 357 4037
www.sfmoma.org



(2000 5 24 -9 17)

Meaning of Labor in the Modern Society in Photography, 'Cultures of Work' Show at Centre de Cultura Contemporania de Barcelona (May 24-September 17, 2000)



1. E. Yokerikhene, 1938 . Colleccio de la familia de Yevzerikhine
2. Boris Ignatovitch, 1920 . Colleccio K. Ignatovitch
3. Boris Ignatovitch, 1931 . Colleccio Maison de la Photographie de Moscou . K. Ignatovitch



가
가 2
가
(Centre de Cultura Contemporania de Barcelona)
9 17
가? 가
가? 가
5 19
가 (Pep Duran), (Roque), (Susana Solano), (Joan Brossa), (Eduardo Chillida)
가 가

가
가
가
(Kollar), (Ferrol), (Miserachs), (Blonzard), (Hammen), (Litzman), (Cuadrada), (Chaiknet), (Michau)가
가
가
가
< >

가
(Soriano), (Moleres), (Lange), (Ronis), (Doisneau)
가
-1 , 8
(Petrousov), (Ignatovitch), (Wolff), (Hallensleben) 가
가 가
www.cccb.org

7

(2000.6.27 ~ 8.31)

'Freeze-Frame' Contemporary British Design and its Process Revealed (Design Museum Lisbon, 2000. June 27-August 31)

(Freeze - Framè)

가 .6 27 8 31

(Fundacao Centro Cultural de Belem)

가 7

(James Irvine), 가

(Jasper Morrison), (Matthew Hilton), 가

(Michael Young), (Ross Lovegrove), 가

(Sebastian Bergne), (Tom Dixon)

7

가 가 " 가

(process) (object) 가

.7

7

www.ccb.pt

가 가:

(7.9. ~ 10.22)

"A Contemporary Dutch Graphic Artist's Work in Retrospective, Swip Stolk : Master Forever" Exhibition (Groningen, The Netherlands, July 9th-October 22, 2000)

(Swip Stolk)가 7 9 10 22

(Groninger Museum) 1960

40

(Swip Stolk Master Forever)'

가 가

30-40

1960 1970

1968

(Netherlands Zuivelbureau)

1971

가1970 VARA

.1980

가

(Rembrandt House, Amsterdam) .1994

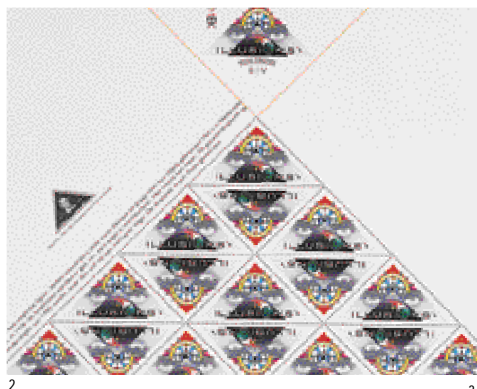
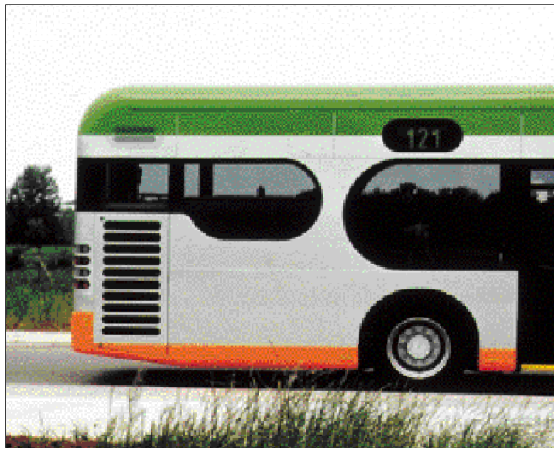
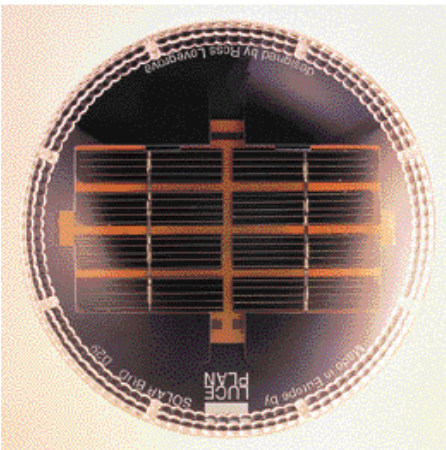
<Dutch>

Groninger Museum, Musemeiland Postbus 90, 9700 ME Groningen, The Netherlands

T. (31) 060 366 65 55 F. (31) 060 312 08 15

www.groninger-museum.nl

- 1: Chair Wait : (Matthew Hilton) Authentics 1997
- 2: 가 (Tin Family), (Jasper Morrison)
- 3: Solar Bud : (Ross Lovegrove)
- 4: S Chair : (Tom Dixon) 1991-1992
- 5: (Ustra) (James Irvine),
- 1999 \ (Mercedes Benz)가
- 6: 'Smarty' (Michael Young), 1998



1. 1985 가
2. < > Swip Stolk, Entwerp Postzegels Illusions. 1985
- 3.
4. < >, 1863-67.
Jozef Israëls 'The Cottage Madonna', 1863-67. The Detroit Institute of Arts. 1999 12 19 2000 3 5 <
- 가(Meester van het Sentiment)-
- 가



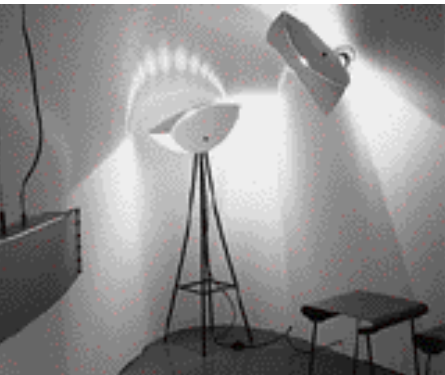
25
EX25

(2000 6 21 ~ 8 13)

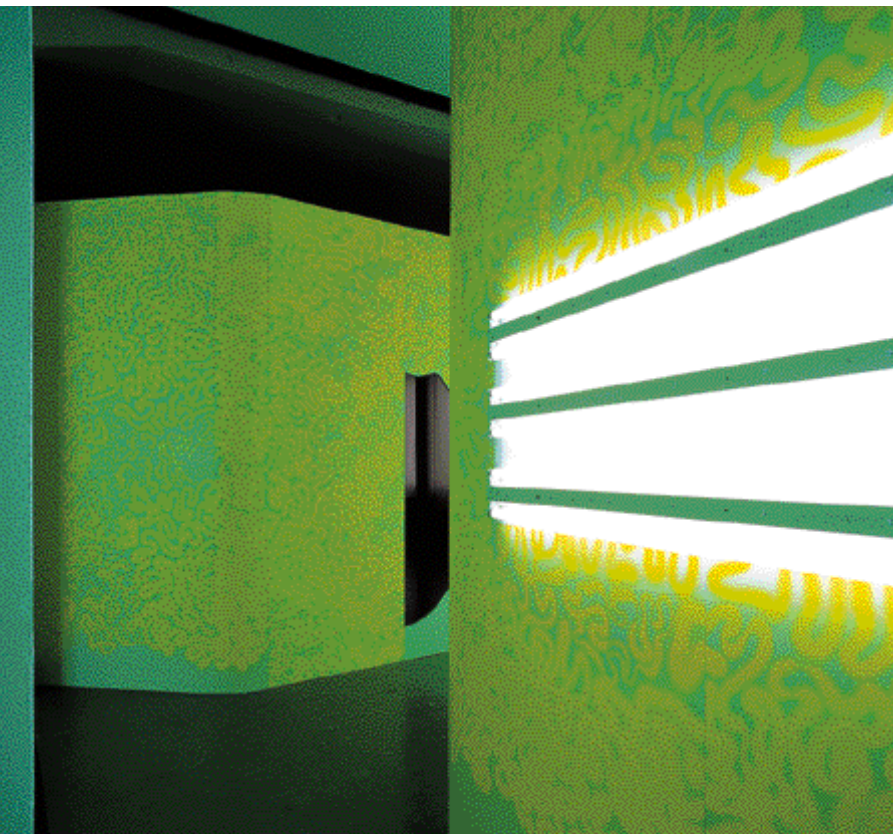
" EX25, Zurich University and Museum of Art and Design Looks Back at the Last 25 Years of Student Works " (Hochschule fuer Gestaltung und Kunst Zuerich Museum fuer Gestaltung Zuerich, June 21-August 13, 2000)

가 'EX25'
(HGKZ: Hochschule fuer Gestaltung und Kunst Zuerich) 125
(Gewerbemuseum Zuerich)
1975 / 25
30
가
가
70
, 80 , 90

(Renee Levis Raum) <
2(Fragment 2)>
(Zobrist/Waeckerlin) (Nik
Emchs) (Karin
Waelchli/Guido) 2
(41) 1 446 22 22
Museum fuer Gestaltung Zuerich, Ausstellungstrasse 60,
CH-8031 Zuerich
www.museum-gestaltung.ch



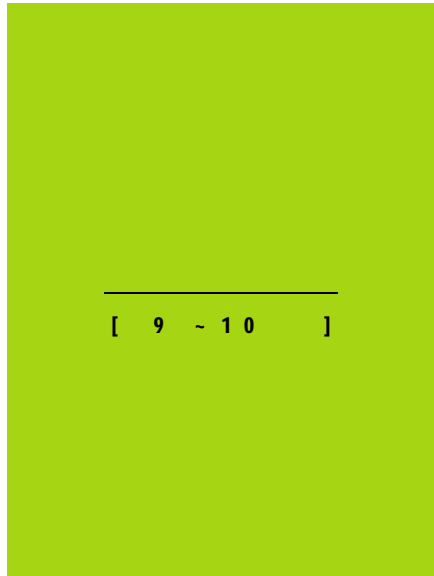
1 2



3

- 1. < (Jubel)>. Photo: Regla Bearth. Hochschule fuer Gestaltung und Kunst Zuerich Museum fuer Gestaltung Zuerich.
2. < > 2000 . Olaf Breuning <Annodam>. 120x150cm. Courtesy Galerie ars Futura, Zuerich.
3. < 2> 2000 . Renee Levi <Fragment 2>. Installationsansicht im Museum fuer Gestaltung. Photo: Regla Bearth
4. EX25

EX25 BIBLIOTHEK FÜR GESTALTUNG UND KUNST ZÜRICH
HOCHSCHULE FÜR GESTALTUNG UND KUNST ZÜRICH
DIE LETZTEN 25 JAHRE WERKLEHRE
HALLE 21.06.13.08.2000
PETER BÄDER, GUNNAR RHEDE, THABER
OLAF BREUNING, WOLFGANG STÄUBLI, ANTON
DANIELE BUETTI, ROSS LINGG, GAL TONG
ANDREA BURKHARD, CHENE BUECHER, MAREK
ARMIN CORAY, NETZHAMMER, THOMAS
CHRISTOPH DIETL, ICHER, ARD PROBBNTG
ANDREAS GIUPPONI, HEITENGER, YDANTE
VIKTOR DITTLI, AGRSCHNER, SUZUKI
NIK EMCH, ALIEM, YCRO, VOGOTOGARTE
RICHARD FEURER, ARCHITURAR, KUNST
CHRISTOPHE GRÄBER, GESTALTUNG WASC
IDA, GUT, VON BEL, BEFORNS, LITEN
ALFREDO W. HABERLI, ABEL, GRAFARI
CHRISTOPHE MARCHAND, ST. MODE, ANDR
ALEX HANIMANN, KTSCHARKLI, TRXKI
ESEN, ISIK, YGGER, AERUNG, WERKOPHRE
HANS KNUCHEL, TITAMP, REDCOV, HADEGG
RENEE LEVIE, ANNE HARCHI, TERTURANIK
BRIGITTA / BENEDIKT, MARTIG-IMHORCH
YVES NETZHAMMER, VIB, BEDGES, AALUNG
THOMAS OTTE, NETZHAMMER, FHREROMAT
ANNE-MARTINE PERRIARD, IB, FERREN
FRANZ RAICHEL, ISCH, HOEGGE, RRODDNTG
JENNY SCHEIDEGGER, THREDEL, SUYANIEL
DANIELASCHIBL, MERRA, WEREL, ZBANDRE
SILVIO SCHMIED, YLDD, TERFOD, RENFVA
SUSANNE SCHMIDT, RCHS, TERTURES, WANG
RALPH SCHRAI, VOGEL, GEBIANT, DKS, DANC
DANIEL SCHWARTZ, QUAL, BRIGBAR, LITUNG
DANIEL SUTER, GHOORAFLE, GRAFANDE
KARIN WÄLCHLI, WIKT, ONST, MODE, NIER
AGATHA ZOBRI, ST, THERES, WÄCKERLIN



FAT, FOa,
Arc en reve centre d'architecture, 7 rue Ferrere, Bordeaux T. (33)-
5-56 52 78 36 http://www.arcenreve.com • 5 30 ~ 9 3

Die Imaginäre Manufaktur
Weizenegger Designbuero • T. (49) 040-30 62 11 00
http://www.stilwerk.de • 8 4 ~ 9 3

Die Creative Explosion - Glas der 50er Jahre in Europa aus
eigenem Bestand
um Duesseldorf Ehrenhof 5 Duesseldorf • T. (49) 02 11-8 99 24 62
• http://www.kunstmuseumduesseldorf.de • 3 12 ~ 9 10

Craft Design - Heikki Orvola Glass-Ceramic-Textile
05 40 • http://www.designmuseum.fi • 9 10

Lindau • 9 10

Industriemuseum • 10
• T. (49) 0 92 87-7 71 25 • 9 10

30
Zeit Blicke - 30 Jahre Fotografie in
Deutschland 30 Jahre BBF Bund Freischaffender Foto-Designer •
Galerie der Stadt Stuttgart • T. (49) 07 11-2 16-
21 88 • http://www.sw.de/galeriestu-ttgart • 9 3

Cityconnexion - Visionen
• Ost-West-Strasse •
Stilwerk Hamburg, Grosse Elbstrasse
68 • T. (49) 040-30 62 11 00 • http://www.citycon-
nexion.de • 7 27 ~ 9 3

Animal House : Designs and Furnishing Items for Pets and
Humans
• Emporio 31, via Tortona 31 int.10 • T. (39)
02 34 53 21 63 • http://www.designerexhibi-tion.org • 9 8 ~ 9
11

Markt- und Ausstellungshallen
Rinderauktionshalle
Eingang Eldenaer Strasse 36A • T. (49) 030-4284 61-0 • 9 12

Theo Jakob AG
Gerechtigkeitsgasse 25 • T. (41) 31-3 27 57 00 •
http://www.teojakob.ch • 8 22 ~ 9 16

Bang & Olufsen : Vision & Legend
(Dansk Design Center)
75
Design Center, HC Andersen s Boulevard 27 • http://www.beo.com
• 6 15-9 17

No.3
• Messe Leipzig, Glashalle • T. (49) 03
41-6 78-0 • http://www.cadeaux-leipzig.de • 9 15 ~ 9 17

Creativ Salzburg und Tisch & Kueche
• Messe Salzburg T. (43) 06 62-44 77-25 8 •
http://www.reedexpoatcreativ • 9 15 ~ 9 17

Haus Lange und Haus Esters : Zwei Villen von Ludwig Mies
van der Rohe
• Haus Lange und Haus Esters, Wilhelmshofallee
91-97 • T. (49) 0 21 51-77 00 44 • 9 17

Messe Leipzig T. (49) 03 41-
67 80 • http://www.midorade • 9 15 ~ 9 17

Work from Holland : Graphic Design in Context
• 1990
• moravian Gallery of Brno, Governors Palace, Moravske Nam. 1a
• http://www.ui42sk/pete-rb/dutchdesign • 6 21 ~ 9 24

Stadium: Architecture of Mass Sport
(NAI)
200
Nederlands Architectuurinstituut Museumspark 25 • T. (31) 10-4 40
12 00 • http://www.nai.nl • 6 8 ~ 9 24

Materialica 2000
• Messe Muenchen GmbH • T. (49) 089-94 92 06 70
• http://www.materialica.de • info@materialica.de • 9 25 ~ 9
28

Plan2000
• 2000
Buro Sabine
Voggenreither • T. (49) 02 21-2 57 15 34 • http://www.vo-
ggemreither.de • 9 22 ~ 9 29

Lehrjahre-Lichtjahre, Eine Jubilaeumsausstellung :
Die Muenchener Fotoschule 1900-2000
• 20

가 100 20
가
Fotomuseum
des Muechner, Stadtmuseums St.-Jacobs-Platz 1 • T. (49)0 89-23 32
29-48 • http://www.stadtmuseumonline.de • 7 7 - 9 24

1902-1989
Hans Hinterreiter Stiftung fuer Konkrete Kunst
•
• T. (49)071 21-3703 28 • http://www.reutlingen.de • 9 30

37 가
37th International Furniture Fair (FIM)
• Feria Valencia • T. (34) 9 63 86 11 00
(34) 9 63 63 61 11 • http://www.feriavalencia.com •
feriavalencia@feriavalencia.com • 9 25 - 9 30

Vom Gerstensaft zum Spitzen-Pilsener von Welt :
Design Geschichte der Marke Beck 's
• CI
• Internationale Design Zentrum Berlin
T. (49)030-29 33 51-0 • http://www.widz.de • 8 25 - 10 1

1900
Paris - Ein Fest fueren Leben Erwerbungen auf der Weltauss-
tellung 1900
• 1900
가 • Grassi Museum • T. (49)03 41-2 14 21 75 •
http://www.homet-online.de/home/grassimuseum • 10 1

가
Moebel aus dem Exil : Die Wohnungseinrichtung Paul und
Johanna Dozsa von Ernst Schwadron, Wien 1933
• MAK-Oesterreiches Museum fuer
angewandte Kunst • T. (43) 171 13 6 • http://www.makat • 10 1

Living Bridges
• 가
가 • NRW-
Forum Kultur und Wirtschaft • T. (49) 02 11-89-2 66 81 •
http://www.nm-forum.de • 7 27 - 10 3

L Esprit de Tinguely
• 가 20
가 (1925-1991) 200 •
Kunstmuseum Wolfsburg • T. (49)0 53 61-26 69-0 •
http://www.kunstmuseum-wolfsburg.de • 5 20 - 10 3

Shigeru Ban
• Galerie Renate
Kammer • T. (49)040-23-26 51 • 9 7 - 10 7

Masahiro Mori : Zeitgenoessisches Porzellandesign
aus Japan
•
• Staatliche Galerie Moritzburg • T. (49)03
45-2 12-59-0 • 8 6 - 10 8

Die Form Suomi
• / •
• Deutsches Porzellanmuseum • T. (49)092
33-77 22-0 • 10 8

New Routes-New Destinations
• •
Staffordshire University School of Art and Design •
http://www.srafs.ac.uk • 9 18-10 8

100%
100% Design : The London Contemporary Design Show
• Earls Court Two • T. (44) 02 89 10 77 24 •
http://www.100percentdesign.co.uk • 10 5 - 10 8

• •
• Feng Shui Center Eppendorf T. (49)040-42 91 29 46
• http://www.feng-shui-center.de • 9 7 - 10 15

Ron Arad : Before and After Now
• 가
• Victoria & Albert Museum T. (44) 171 9 38 85 00
• http://www.vamac.uk • 6 12 - 10 13

Abitare il Tempo
• Veronafiere • T. (39) 51 86 43 10 F. (39) 51
86 43 13 • http://www.veronafiere.it/abitareiltempo • 10 12-10
16

Dansk From
• •
Stilwerk Hamburg •

http://www.stilwerk.de • 9 21 - 10 22
Follow the Signs : Party-Flyers from Zurich
• • 1980

~ 10 22
1923-1932
Das Bauhaus 1923-1932 Kunst und Tecknik-Eine neue Einheit?
• • 20
• Stiftung Bauhaus Dessau T. (49)03 40
6 50 82 50 • http://www.bauhaus-dessau.de • 8 11 - 10 23

• Crafts Council Gallery • T. (44)171 2 78 77 00 • 9 14
-10 29

Luis Barragan : Die stille Revolution
• 20
• •
Vitra Museum • T.
(49)0 76 21 7 02 33 51 • http://www.design-museum.de • 6 22
-10 29

• •
http://www.labiennale.org • 10 29

100
100 Jahre Wilhelm
• Wagenfeld(1900-1990) •
Wilhelm Wagenfeld Haus T. (49)04 21 3 39 99 33 • 10 31

Swip Stolk : Master Forever
• Groninger Museum • www.groninger-museum.nl
• 10 22

Nastro

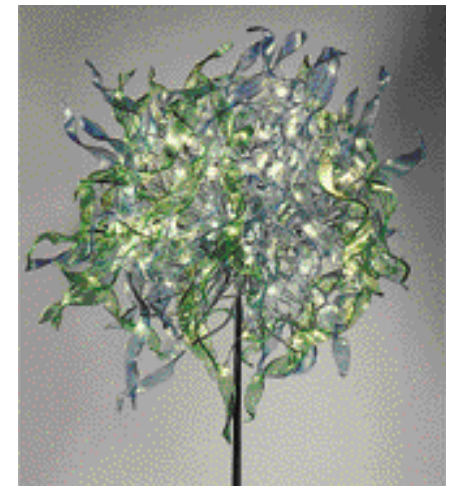
most successful pieces that has been shown at the last EuroLUCE

Lighting Fair 2000 in Milan (Italy)., named NASTRO.
NASTRO is a complete hand made realization by the masters
of ANDROMEDA, each glass piece is different from all the
others, and They are installed in a frame with metal flexible
elements: The result is that any fixture will never be the
same to another one.

The original idea borned from the inspiration of a long
woman's hair moved by the wind...

It is a "Custom Tailed" art lighting piece, and from the
original design of a round shape it can be turn into larger or
smaller size, squared or rectangular shapes, wall brackets,
and any other design that a client may will desire.

The lighting sources are made by low voltage 1.2V with
bulbs having a power from a minimum of 5 watts to a
maximum of 50 watts. The glass parts are made in all gold
24kt, all clear, and then with soft blue, soft green, and soft
red: then any other color requested by the clients.



2000 (GD)

가 (Good Design) 가
GD 1985 320
18 685 ,39

'55"HD
'3007 ;LG
;()
;() ()
) ; 25

(fusion car) ,
가
(http://www.designDB.com)
(02)708-2079



2000 '55 HD TV'

(KIDP,)
4 10 ,
1 (DIC; Design Innovation Center)
(KAIST),
()
15
(02)708-2060

1, 2 (Young Designers Meeting)

KIDP 가 6 28
AT 30
8 KIDP
가

2 LG 가
가
KIDP가
.3 가 40
(02)708-2141



KIDP, (KIDP,) 8 25
()
(02)708-2077
2
KMP(Korea Millennium Products)
가 3 가
100
가
가
(02)708-2070-4

KIDP, 가

KIDP 8 7 8 19 2 KOICA(
) 2000
가
가
가
12
2 LG
가
2
(02)708-2057



S. Winston Pathiraja
가
가
8 7
가
가
가

가
가
KIDP KOICA
가
가
가
가
KIDP, KOICA, ICTC



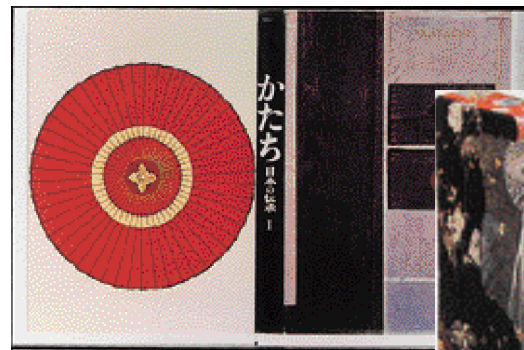
LG



()
가 가
9 4 8 , 1 30 5 30
,5 7 .9 4
(), (IRI
,6 (),7
(),8

()
가 가 , 가 22
(02)741-3273
(02)708-2069
KIDP,
7 14 ,
) 가
(02)708-2016

(MOU) 7 20
H.E.Enrico Letta
3
(02)708-2056



:1963



:1972

7 21 9 6

가

50

가

,80

가

600

,가

,가

가

9 1 2

4

9 1

<

가,

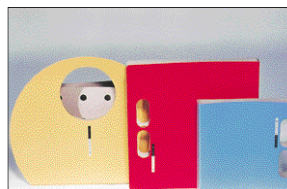
가

가,

가

(02)580-1648

'Maison & Objet'



가



' Lolita



Maison & Objet

(Maison & Objet) '

(Parc

가9 8 12

des Expositions Paris - Nord Villepinte)

50 25,000 가 가

가

(02)3442-1636 SBA Korea

200

가

가

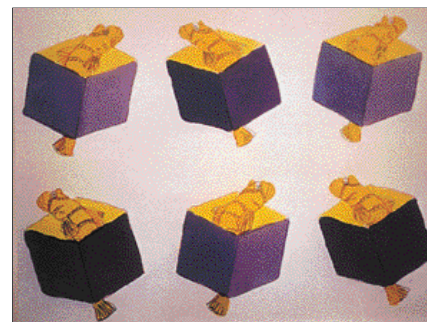
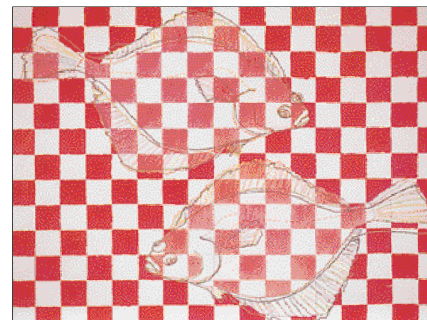
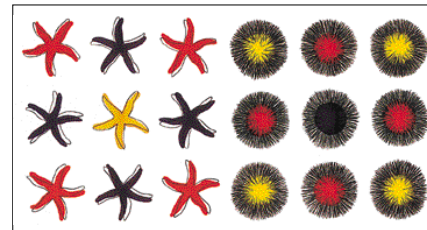


8 6 9 3

20

가

가



" "



1956

.1981

,가

1

6

6

가

가?

가가

?

가

가

가

가?

2

가

가가

가?

.10

가

가

가

가

가

가?

가

(dome)

가

가

가가

가

가

가

가

?

가

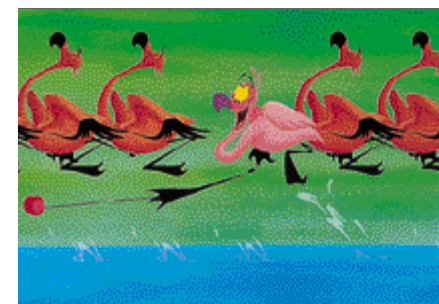
(Zoological Park Insectarium) ' 가

가

가

1940 < 2000 >

가 60
 가
 2000'
 2000' 8
 < 30
 > ()
 5
 < 30
 > ()
 > ()
 > ()
 > ()
 > ()
 1991
 가
 가



(最古) ()'

22 10 22 1 9
 30 500 1
 (http://www.cippexpo.com)
 webmaster@cippexpo.com

2000



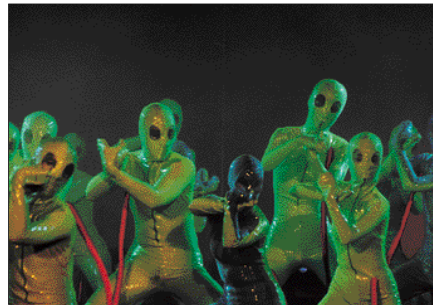
7 30 8 6 (SETEC)

21C
 1
 2
 3
 (02)542-2053

(NIMA Collection)

() 7 7
 3
 가
 가
 가 50

(02)422-8111



4
 10 4 7 2
 가
 가 가

(02)755-4637

2
 2 10 20 11 2
 COEX
 KMP(Korea Millennium Products)
 150
 (02)708-2070-4

Pre-Expo 2000

(Mokpo International Ceramics PRE-EXPO 2000)

가 9 23 10 3
 Pre-Expo 2000'
 10 , 150 150 가
 가
 MBC, KBS
 가
 (061)284-3130. 284-4184/ Fax (061)284-1031

8 6 9 3

가 가

30 (縣)



()
 가 가
 ()
 () 7 19 ,
 (COEX)
 (e-Book)
 (voice book) 가

104
 가 1 CD
 가
 가

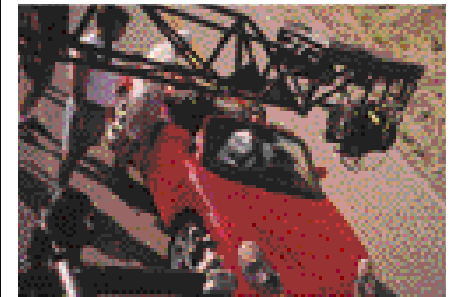


가 'KLT01'
 ()가 2
 19.5 45
 'KLT01' 45
 가 50%
 가가
 가
 가2 30
 'KLT01'
 (ECE) 가
 300
 4 ,
 20 , 30
 (02)758-1764

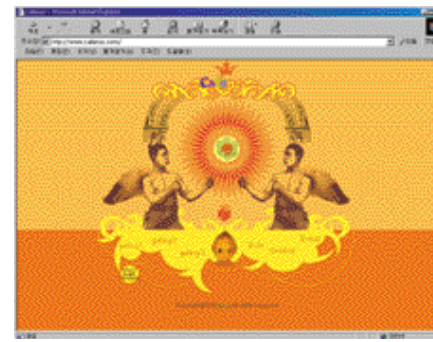
TV-CM
 가
 가
 TV-CM .90

,2000 250

TV-CM ,
 6
 TV-CM 6 , Fox sports, CNN, ESPN,
 TV RTL,
 Antenna3, Canal+, Canale5
 (02)758-1764



()
 7 25 , 1
 ()
 가 가
 ()

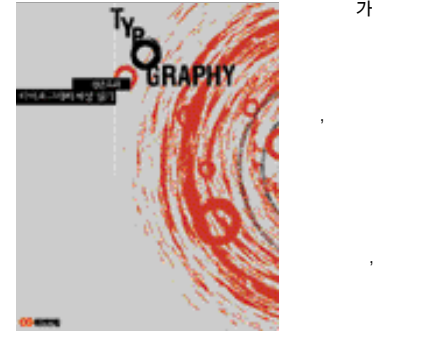


가
 16.7 (:10 ()
 : 6.7 :
)
 (3,600)
 50 300
 (Two
 Tone) 가 LCD
 가
 , ()212 7
 , 8 1
 , 2001
 , 2001 5
 ()212, LCD
 가
 TV
 가
 (02)2262-4563
 가
 가
 2
 8 19 , 9 4 12 21
 16
 가가
 가
 가
 http://gsi.yonsei.ac.
 (02)361-4187
 8
 7
 15.7
 , 15.1
 가
 , 18 15.7
 .TV 가
 (hinge) 가
 가
 (Two
 LCD
 가
 , ()212 7
 , 8 1
 (02)5433-212, () (054)973-6766
 ()
 125
 (http://www.waawaa.com 67.6%
 6
 가가
 가
 가
 'Cafenzd
 () 가
 'Cafenzo(http://www.cafenzd.com)
 'Cafenzd
 (Humour)

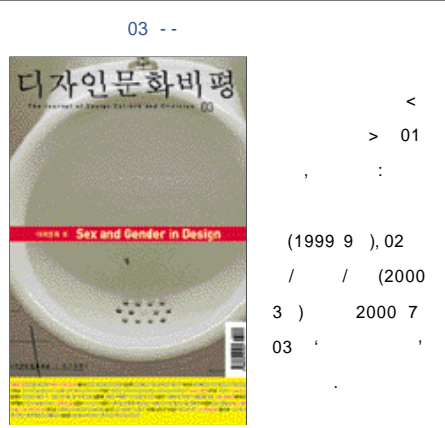
(Whit) (Kitch)
 70
 (02)549-1194
 'Cafenzd
 Asia evolution
 ()가Asia evolution
 (http://www.asiaevolution.com)
 Asia evolution 가
 Flash
 Icon
 (02)549-1194
 Asia evolution
 KBS
 11 12
 V' 70
 2
 9 15 ()
 9 19 (), 9 21
 ()
 (02)3272-7575
 2000
 가 2000
 9 2 10 31 60
 , 2000
 2 ASEM,
 2002
 가 2000
 가 가가
 21
 가
 & 8 18
 가 .7 29 5
 가 (, ,) &
 &
 가
 Personal
 Statement
 (02)732-3371
 (City
 Vision)
 (Digital Alice)
 가 가
 (Media
 Entertainment)
 가
 2
 9 27 28 , 10 18 19
 (Media Industry
 Symposium)
 http://www.mediaseoul.org http://www.mediacity.
 seoul.kr
 4
 가 4
 (6) 1999 3
 , 3 가 , 4
 가
 가
 9 6 () 7 ()



가
 가
 1 5
 가
 가 7,000 (02)2275-6151



가
 가
 가
 가 19,000 (02)573-9944

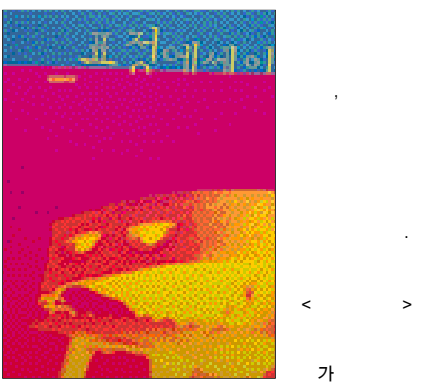


가
 가
 가
 가 13,000 (02)763-2320



가
 가
 가
 가

가
 가 25,000 (02)763-2320
 가 278



가
 가 184 15,000 (02)3322-601

가
 가
 가 50
 가 (seal), 132 12,000



가

PRE-EXPO 2000
 http://www.mokpoexpo.com
 가
 100x100x100cm
 530-701 1188-2
 PRE-EXPO () 9 5
 (061)284-3130/ Fax (061)284-1031
 2000 ELLE
 ELLE
 http://www.elle.co.kr/2007/contest/contest.htm
 1 3 가 A3 Size.
 1 1 () 50%
 ELLE CLUB) 2 1
 50 30 20 110-779
 51-8 9 ()
 9 7 (02)3702-0704, hd kang@elle.co.kr
 2002 가
 2002
 2 () 3D
 (front, side, top, isometric)
 3 1
 50 64
 3 () 9 22
 (02)511-8377

2000
 가 가
 (Playground of Your Imagina-tion)
 가 .60%
) 가 |17-25
 1.5x1.5m, 20kg, 10cm
 250
 17 25 (2000 1
 1)
 35mm
 (http://www.jungle.co.kr)
 (Asia Pacific Grand Prize)
)+ US \$8,000+ 2 US
 \$5,000+ 3 US \$3,000+ 4 5

US \$2,000+ • |135-608
 889 , 2000
 | 9 10 • |(02)3468-2834
 2 가
 가 가
 http://www.mk.co.kr/ 가 ,
 가 가 | 가
 20%
 3 1 ,가 20
 300 150 , 50 ,가 20 • |
 4 892 • |9 28
 |(02)2000-2751, (02)2275-0935
 1
 가 가
 () 가
 |A4 (:1/30), (,
 (2) , () ,
 (H/W, S/W), (600x600mm 2 -
 , COLOR SCHEME) .1
 2
 | 3 (가) , 1
 (가) , 50 • |
 5 111-89 • |10 7 •
 |(02)2601-0141

가
 가
 가
 가 3 ()
 가) ()
 가)
 1 (Consumer
 Products) (Industrial & Business
 Products) ,가 (Furniture &
 Environmental Products) (Transportations) ,
 (Others), (Design Exploration)
 6 2
 1 2
 가 2000 9 20 10
 5
 |
 () , (,) ,
 가) , (CD-ROM ,
 () ,)

가 |
 2 (5x7
 (600x900mm) 1-2
 / ()/ 2
 (5x7) .1 10
 | 1 , 5 , 1
 50 , 10 • |10 2 • |
 1 1 • | (02)535-
 7779,6657/ FAX (02)535-6578

5 가 1
 (AHEC가 가
 (KFFIC 가 (KSFT가 5 가
 1 가 8 21
 24 , 가
 10 .8 17 19 3
 40 180 103
 가
 가 1
 10 9, 10
 가 가
 10 30 2000 가 (KOFURN)
 가 1 2
 ,가 가 , 7
 2 • |Tel
 02 510 4119 PR

(KAID),
 2000 가
 가
 가)가 3 ()
) ()
 가)
 1 (Consumer
 Products) (Industrial & Business
 Products) ,가 (Furniture &
 Environmental Products) (Transportations) ,
 (Others), (Design Exploration)
 6 2
 1 2
 가 2000 9 20 10
 5
 |
 () , (,) ,
 가) , (CD-ROM ,
 () ,)
 | TEL 02 565 6042-3 FAX 02 567 0449
 ()
 www.kaid.or.kr

